



LOVE MAKES ALL THE DIFFERENCE

The seeds of our Extend the Branch capacity building and shelter expansion project were planted following a backyard barbecue and the efforts of a grateful former guest. That former guest – Tammy – today is a seasoned manager at both Horizons Conference Center and the Temple Theatre. When her colleagues gathered in early 2015 to brainstorm ideas of local causes to support, Tammy suggested Mustard Seed Shelter, ultimately revealing that she and her two sons had stayed there several years prior when they found themselves homeless and living out of her car. “The pieces of my life came together at Mustard Seed Shelter,” says Tammy. “I was able to build my life, and it was the love I found there that made all the difference.”

Patty Shaheen
Honorary Chair, Extend
the Branch Campaign

“I am so glad Mustard Seed Shelter was there for Tammy and her family. Through the Extend the Branch project, I want to help make sure it’s there to help even more women and children discover their full potential. If we can graduate even one ‘Tammy’ every few months, just imagine the impact on our community.”

TIMELINE HIGHLIGHTS

2015

Mustard Seed Shelter celebrates 20 years in the community. Former guest Tammy helps plan celebration event and *Saginaw News* article attracts attention of investors **Dave and Lori Pendleton**, whose encouragement led to exploring various options to expand shelter capacity.

2017

Board unanimously approves the project and capital campaign. Initial architectural drawings are completed by R.C. Hendrick and approved by the City of Saginaw. More than **\$120,000** is raised or committed toward the project.

2019

Fundraising and planning continue, with the goal of **moving to the building and construction phase** once funding is complete.

2016

Board of directors explores numerous renovation and expansion scenarios to accommodate more women and children in need. **R.C. Hendrick & Son** engaged as general contractor for the project.

2018

\$40,000 challenge matched through Mother’s Day appeal and Facebook campaign. **Charlie Wargel** becomes project manager. Wall framing completed by **Herb Spence Jr. Residential Building Program at Delta College** in collaboration with **Saginaw-Shiawassee Habitat for Humanity** and walls are moved to winter storage. **Patty Shaheen** becomes honorary chair of fundraising effort. Pledges/donations exceed **\$400,000** and in-kind donations and pledges exceed **\$100,000** by year-end.

OUR MISSION

We water the seed of inner strength in homeless women so they can make a better life for themselves and their children.



1325 Cherry Street | Saginaw, MI 48601
989-755-4741 | info@themustardseedshelter.org

themustardseedshelter.org



EXTEND THE BRANCH

to help us shelter more
women and children

The need is great – learn how you can help
us double the number of homeless families
we serve!

Tammy Baker
Former Guest at
Mustard Seed Shelter

“The pieces of my life came together at Mustard Seed Shelter. I was able to build my life, and it was the love I found there that made all the difference.”

CAPACITY BUILDING AND SHELTER EXPANSION PROJECT

EVERY DAY WE GET CALLS FROM WOMEN WE HAVE TO TURN AWAY

On any given night in Saginaw County, there are about 350 homeless individuals. Many of them are single women, often with young children in tow, living in their cars, moving from one friend’s couch to another’s, or even sleeping on the street. Mustard Seed Shelter offers these women temporary shelter from the weather, a clean bed, warm meals, a shower, a comforting hug and a chance to “unpack” their life stories and begin to piece their lives back together. Guests are connected with necessary medical, psychological and substance abuse treatment, as well as education and employment resources and government housing grants for those who qualify.

But every day we get calls from as many as five or six women we have to turn away because we just don’t have the beds. **We are looking to our community for help in funding a 3,500-square-foot addition to our current facility, enabling us to double our current capacity.**



Current Shelter



Planned Expansion

PROJECT OVERVIEW

In addition to adding new capacity, the Project will renovate and update our current facility. Once complete, our Shelter will include the following elements:

- Six new single guest bedrooms, including a handicap-accessible suite
- Guest bedrooms designed to accommodate families
- 24-hour staffing suites (for volunteer, staff or social work/nursing intern)
- New and upgraded bathrooms for guests, staff and visitors
- Private intake and counseling office
- Conference room
- Expanded kitchen, dining and living room areas

- Two spacious laundry rooms
- Children’s playroom
- Exercise room/meditation space
- Food and supply storage areas
- Renovated office space
- “Enviro-closet,” to prevent bedbug infestation from newly arriving guests
- Updates and upgrades to existing building to improve energy efficiency, safety and comfort
- Roughed-in space – enough for four additional bedrooms to meet future needs
- Additional parking

PLEASE JOIN US

Thanks to many donors, our dream to Extend the Branch is well on its way. But we need your help. Please donate at themustardseedshelter.org/capital

SPONSORSHIP LEVELS

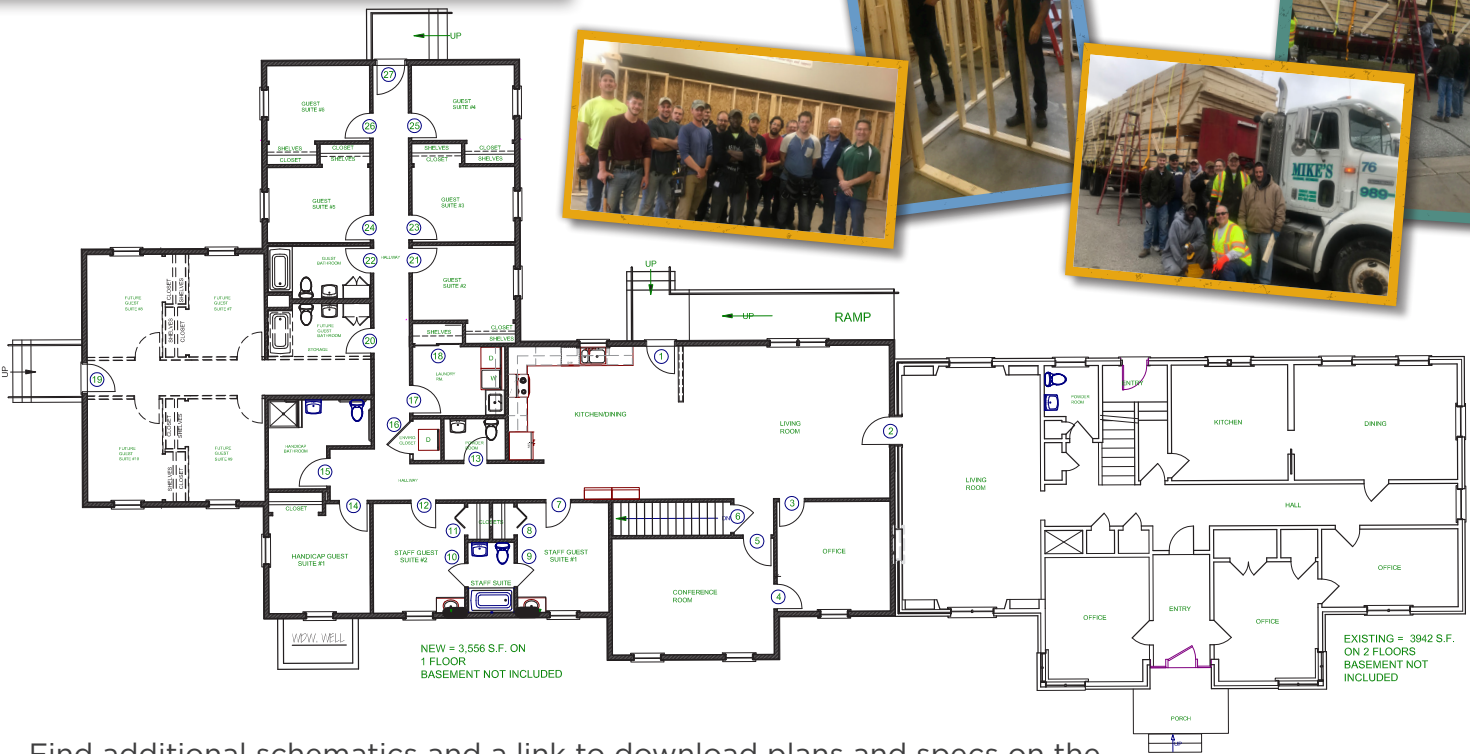
| | |
|----------|-------------------|
| Platinum | \$50,000+ |
| Diamond | \$25,000-\$49,999 |
| Gold | \$10,000-\$24,999 |
| Silver | \$5,000-\$9,999 |
| Bronze | \$1,000-\$4,999 |
| Copper | Up to \$999 |

DONOR NAMING OPPORTUNITIES

Ask us about **donor naming opportunities** for the overall addition, specific rooms and/or various building components – available for all donor levels (including in-kind donations) above \$500. Please contact us if you would like to arrange for a member of our committee to visit your church, organization or business.

A PURPOSEFUL PARTNERSHIP

Students from Delta College’s **Herb Spence Jr. Residential Building** Program built the walls for the shelter expansion!



Find additional schematics and a link to download plans and specs on the R.C. Hendrick Plan Room at themustardseedshelter.org/capital.